

# Offices, Meeting Rooms & Events

Located in Woolwich in the Royal Borough of Greenwich. the TRL Living Lab is located right in the heart of its state-of-the-art London testbed, offering over 24km of monitored routes over a private fibre network. .

The following facilities available to hire either in part or in its entirety:

- Event Space
- Open Plan Office Area
- Offices
- Meeting Rooms
- Electric Vehicles



# Offices, Meeting Rooms & Events

## Event Space

The Living Lab at Woolwich offers a large open plan area that encompasses both an event area as well as an open plan office area. The Event space has the full Audio Visual facilities to allow for professional presentations and briefings. The area can be configured to client requirements according to the type of event.

### Key Facts

- 80m<sup>2</sup>—reconfigurable area to suit requirements
- 110" motorized projector with 55" reinforcement display
- Sennheiser microphone solution with ceiling mounted speakers and audio output for webinars



## Open Plan Office Area

In addition to the event space there is also the open plan office area that is available for clients to work from whilst carrying out work using the facility.

### Key Facts

- 16 height adjustable motorised desks
- 27" 4K Displays
- Wireless Keyboard and Mouse
- 1gbps internet access—wired and Wi-Fi



# Offices, Meeting Rooms & Events

## Meeting Rooms

Two meeting rooms are available for use within the facility including high spec audio visual equipment and video conferencing facilities.



### Large Meeting Room Key Facts

- 23m<sup>2</sup>—seats up to ten
- 75" 4K Display
- Cisco Videoconferencing Facilities
- Screensharing facilities via Clickshare and HDMI
- Integrated Speaker System
- Large Whiteboard

### Small Meeting Room Key Facts

- 10m<sup>2</sup>—seats up to four
- 43" 4K Display
- Cisco Videoconferencing Facilities
- Screensharing facilities via Clickshare and HDMI
- Integrated Speaker System
- Large Whiteboard



# Offices, Meeting Rooms & Events

## Private Client Office

The Private Client Office is an area that can be exclusively allocated to clients to carry out confidential work where required or to provide a dedicated project office where trials are taking place on the testbed.

### Key Facts

- Private Client Office:
- 55" 4K Display
- Four height adjustable motorised desks
- Cisco Videoconferencing Facilities
- Screensharing facilities via Clickshare and HDMI
- Large whiteboard
- Full access control

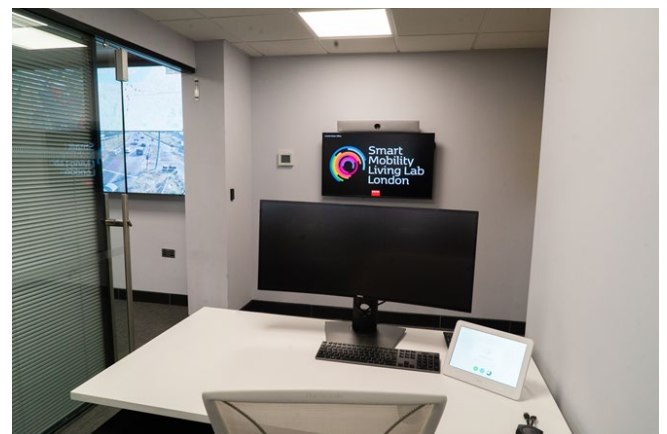


## Control Room

The control room office is ideal to observe those using the control room or for other applications where an enclosed space is required such as teleoperation.

### Key Facts

- 43" 4K Display and 34" Ultrawide 4K Monitor
- Single height adjustable motorised desk
- Cisco Videoconferencing Facilities
- Screensharing facilities via Clickshare and HDMI
- Full Access Control



# Offices, Meeting Rooms & Events

## Service Vehicles

There are two fully electric service vehicles available for clients to hire for any operational activities they may need to undertake whilst using the testbed.

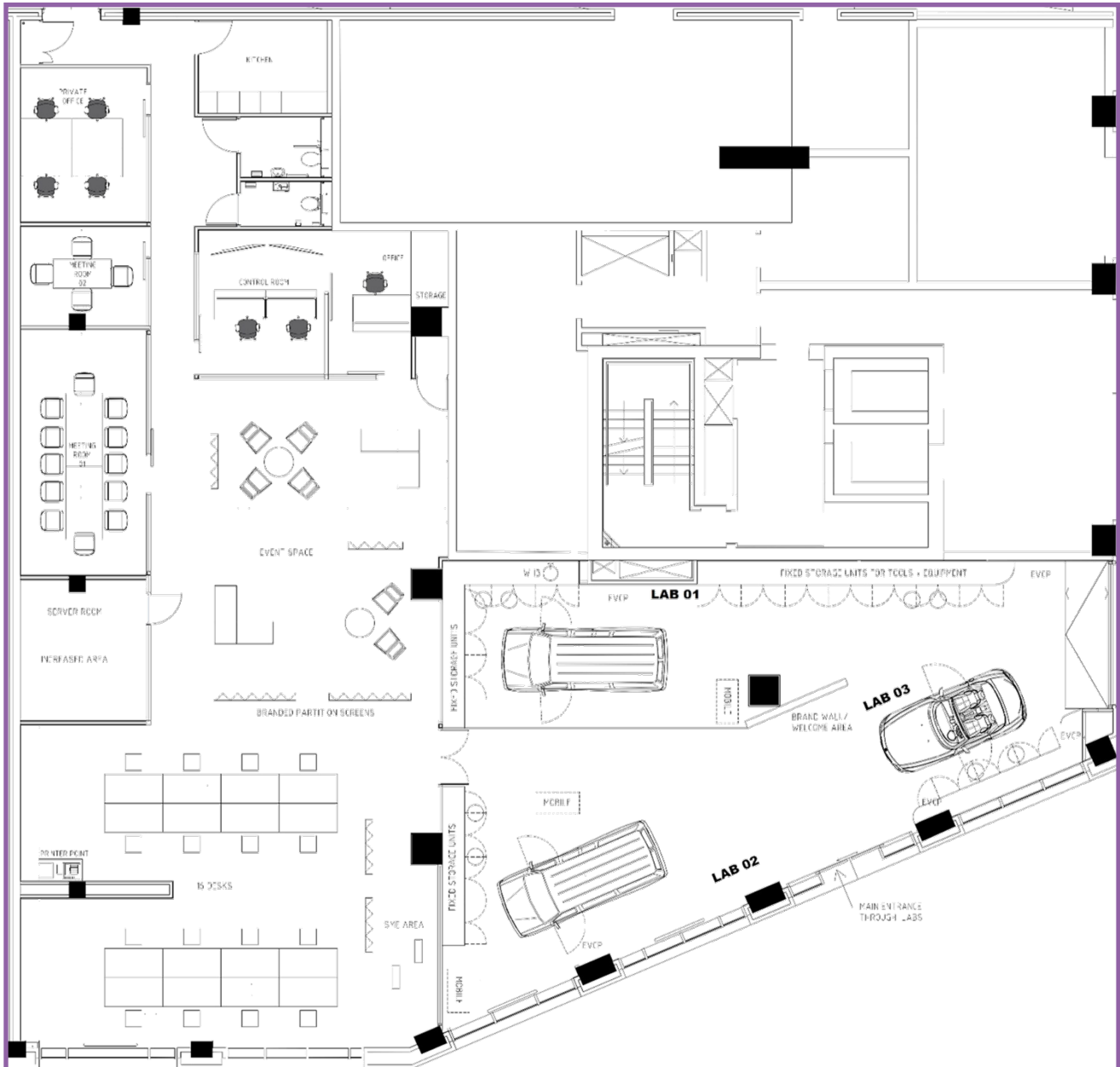
### Key Facts

- Nissan eNV200:
- Seats six plus a driver
- Capacity to transport larger items with the seats collapsed
- BMW i3
- Seats three plus a driver



# Offices, Meeting Rooms & Events

## Plan View



## Other Facilities

Other facilities available at the Living Lab in Woolwich include a fully equipped kitchen and toilet facilities.

## Where to find us

### Address

Unit 7, 14 Victory Parade  
Plumstead Road  
Woolwich  
London  
SE18 6FL

[Google Maps Link](#)

### Getting Here

Parking: The nearest public car park is Cannon Square Car Park located within the same development as the Living Lab Office

Tube: DLR Woolwich Arsenal

Train: NR Woolwich Arsenal

Airport: London City Airport



Click here to take a quick video tour of what's available at the Living Lab and how it is used.